




DO MORE

FOUNDATION

WHO IS THE DO MORE FOUNDATION?

- **Registered IT000234/2017**
- **S18A tax exemption through SARS**
- **Board of trustees with independent representation**
- **External accountants & independently audited**
- **Small operational team**



WHAT WE DO:

We inspire **COLLABORATIVE PARTNERSHIPS** – inspiring more people & organisations to #DoMore



HOW WE DO IT:

Through authentic, inspiring platforms for doing “good” together



WHY WE DO IT:

We believe that by inspiring **MORE** people to do “good”, **TOGETHER** we can make a real difference

THE FOUNDATION'S FOCUS AREAS

We believe in Doing More... our passion is to #DoMore in order to make a significant impact on the impoverished communities of South Africa



#DoMore FOR
YOUNG CHILDREN



#DoMore TO
EASE HUNGER



#DoMore TO
SUPPORT YOUTH



#DoMore FOR
THE CARE OF
ANIMALS

OUR NATIONAL REACH



LOCATION

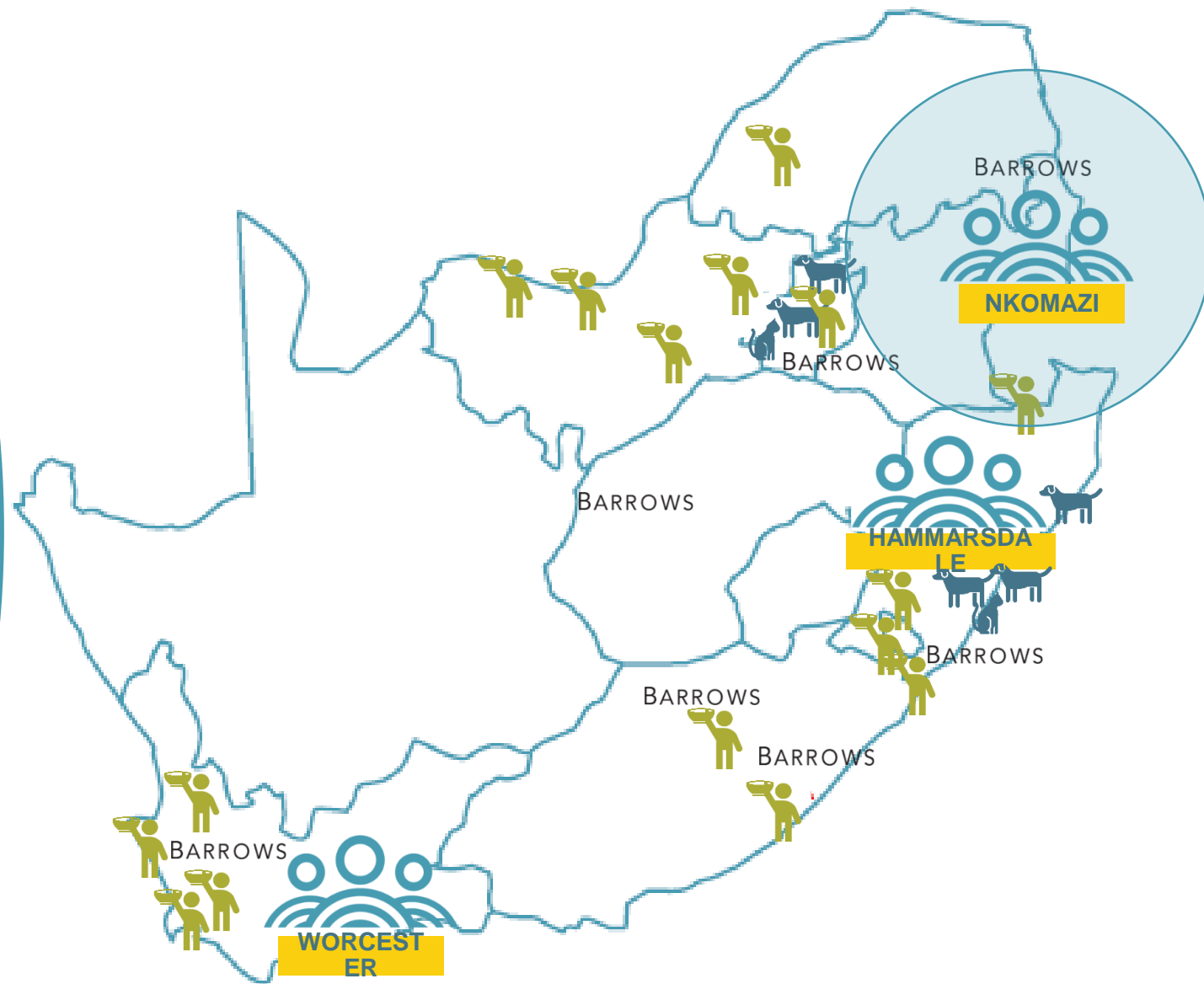
Large scale
community project



Snack provision to
young children

BARROWS

Distribution of Early
Learning material





OUR JOURNEY

#DoMore4Nkomazi

2015

- **RCL FOODS = BIGGEST EMPLOYER IN NKOMAZI**
- **PASSIONATE ABOUT ASSISTING THE COMMUNITIES IN WHICH WE OPERATE**

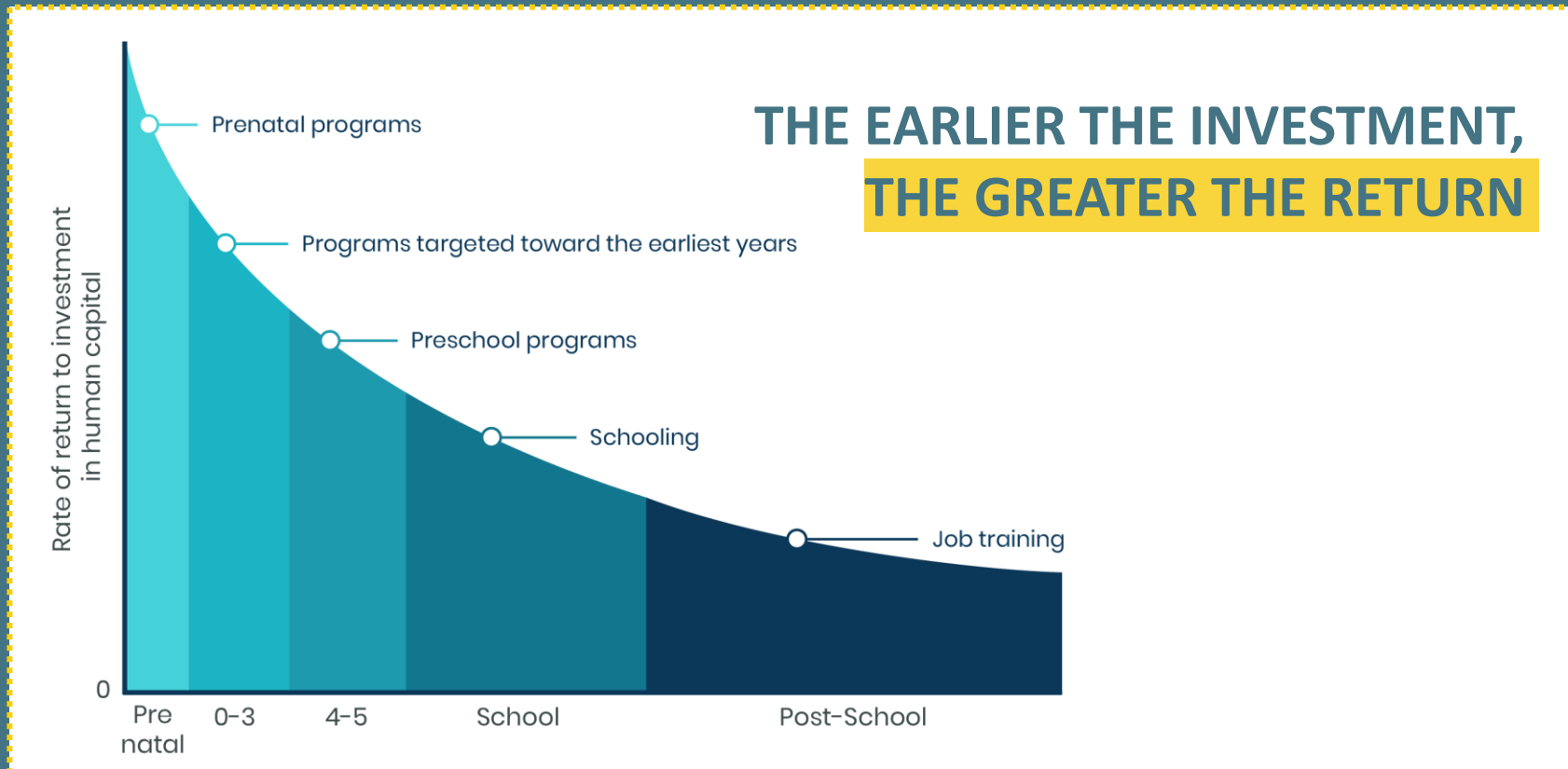
**WARDS 16 AND 19
IDENTIFIED AS POVERTY
NODES VIA THE CRDP**

**CHALLENGE
OF
LEAKY
BORDERS**

**CHILDREN NOT
ACCESSING
LEARNING
PROGRAMS**



OVERVIEW: LEAVE NO YOUNG CHILD BEHIND



OVERVIEW: LEAVE NO YOUNG CHILD BEHIND

HOW WE AIM TO PROMOTE ECD



- **Spearheaded by the Foundation in 2015**
- **Implementation of the National Integrated ECD Policy in wards 16 & 19**
- **Multi-faceted**
- **Multi-partner initiative**



Government
(district & provincial)



Community



Municipality



Business



Civil Society

OVERVIEW: LEAVE NO YOUNG CHILD BEHIND

ESSENTIAL SERVICES/NEEDS OUTLINED IN THE ECD POLICY



ACHIEVEMENTS: LEAVE NO YOUNG CHILD BEHIND

MOU SIGNED BETWEEN PROVINCIAL GOVERNMENT DEPARTMENTS & DO MORE FOUNDATION



38% INCREASE

IN ENROLMENT OF YOUNG CHILDREN
(0-5 YRS OLD) SINCE 2017



96% ECD CENTRES

FOLLOWING DEPT. OF HEALTH'S MENU
GUIDELINE - NUTRITIONAL SUPPORT



SUPPORT FROM LOCAL BUSINESS,
NGO's AND CBO's HAS

ALMOST DOUBLED

COMPARED TO 2017 STATS



20%

INCREASE IN ECD STAFF CREATING
25 NEW JOBS IN THE COMMUNITY

IMPROVEMENTS IN THE LEARNING PROGRAMME



44

ADDITIONAL ECD QUALIFICATIONS
RECEIVED BY ECD STAFF (LEVEL 1+)



171%

INCREASE IN CENTRES RECEIVING
DONATIONS OF ECD EQUIPMENT



**INCREASED ACCESS TO
GOVERNMENT SUPPORT**

80%

OF ECD CENTRES ARE
RECEIVING DSD SUBSIDY'S



35%

Local health
inspector

24%

Department of
Social Development

% INCREASE IN
SITE VISITS
FROM GOVT.
DEPARTMENTS
(2017 – 2018)

36%

Health
workers

83%

Department of
Education



**CURRENTLY BENEFITTING OVER 4000 YOUNG CHILDREN FROM 24 ECD CENTRES
& 17 PLAYGROUPS**

OVERVIEW: COLLABORATIVE PARTNERSHIPS



social development
MPUMALANGA PROVINCE
REPUBLIC OF SOUTH AFRICA



health
MPUMALANGA PROVINCE
REPUBLIC OF SOUTH AFRICA

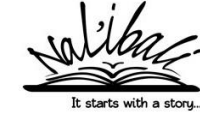
2015
5 PARTNERS



education
MPUMALANGA PROVINCE
REPUBLIC OF SOUTH AFRICA



2019
43 PARTNERS






DO MORE

FOUNDATION