



BRIDGE National Monitoring & Evaluation (M&E) Community of Practice

COMMUNITIES OF PRACTICE

What is a CoP?

A community of practice (CoP) is a group of people with a common interest who come together to learn more about it. BRIDGE is a leader in setting up, managing and running communities of practice in different educational fields.

Inputs

- Need & purpose
- Common interest
- Multi stakeholders
- BRIDGE methodology
- Facilitator/champion
- Administrative support
- Venues & logistics
- Funding

Activities

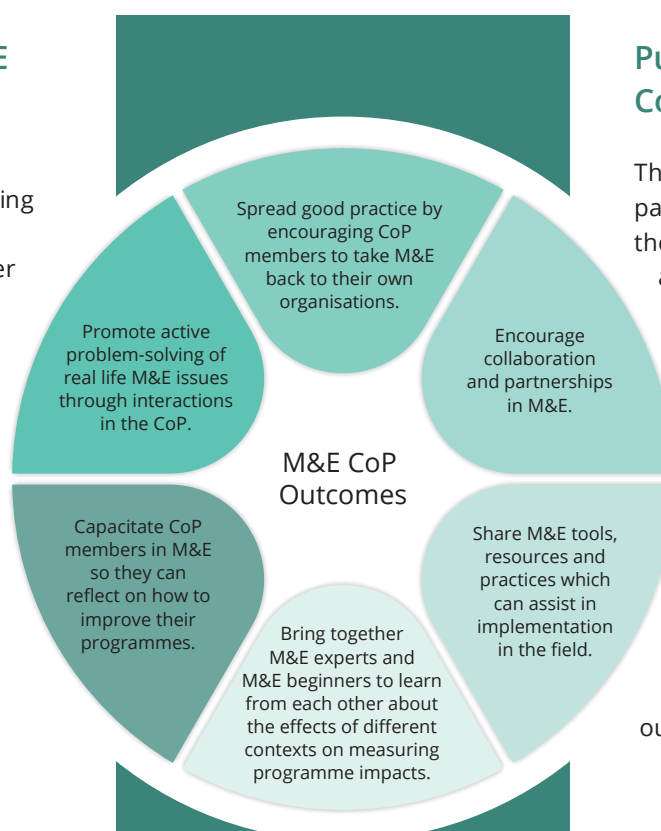
- Sharing information
- Sharing practices
- Sharing resources
- Identifying and solving problems
- Networking
- Forming partnerships & relationships
- Responding to policy developments
- Creating products & resources
- BRIDGE Knowledge Management

Outputs

- Knowledge products
- Joint ventures
- Maps
- Pilot projects
- Resources, guidelines & tools
- Shared practice models

The importance of M&E

The goal of improving the performance of our education system and our students' learning outcomes cannot be achieved without M&E. We need to gather and interpret educational data of all kinds in order to understand the impacts of policies, sub-systems or interventions. Without this knowledge we cannot plan and implement effective solutions for overall systems improvement. The role of M&E in educational transformation is becoming increasingly valued by government agencies, funders, programme implementers and programme beneficiaries.



Purpose of the M&E Community of Practice

The M&E CoP is a collaborative partnership between BRIDGE, the South African Monitoring and Evaluation Association (SAMEA), Khulisa Management Services and Tshikululu. The partners recognised that an understanding of M&E processes, and what data can and cannot teach us about the system, is important to all those working towards improving educational outcomes and not just to M&E specialists only. The CoP's outcomes are set out on the left.



What happens in an M&E CoP meeting?

- Expert inputs on theories, concepts and approaches
- Case study inputs: successes & failures
- Bringing together theory and practice
- Interactive discussions
- Problem solving and practical discussions
- Guidance from a range of thought leaders
- Sharing of tools and resources
- World Café rotations
- Reflections and self-assessments



Examples of the M&E CoP's scope and coverage

Presentations on programme evaluations. Examples:

- Project for the Improvement of Learning Outcomes
- First Rand Foundation Maths Chairs
- Cofimvaba ICT4Red
- Zenex Reading Catch up Programme

Exploration of M&E types and methods. Examples:

- Meta-evaluations
- Outcomes-based evaluations
- Impact evaluations
- Participatory methodologies
- Purpose-driven evaluation

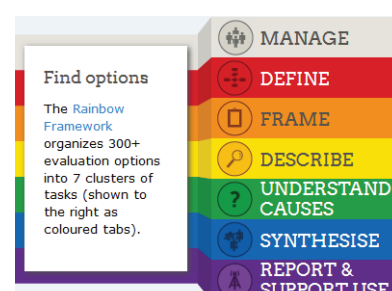
Exploration of key processes.

Examples:

- Evaluation cycles and timing
- Commissioning evaluations
- Evaluator competencies
- Interpreting evidence and data

Sharing of Tools and Resources.

Examples:



“

M&E is not only an externally driven requirement for reporting to funders, but key to tracking our own growth and using data for planning. What we learn at the CoP helps us to carry out both these activities more efficiently.

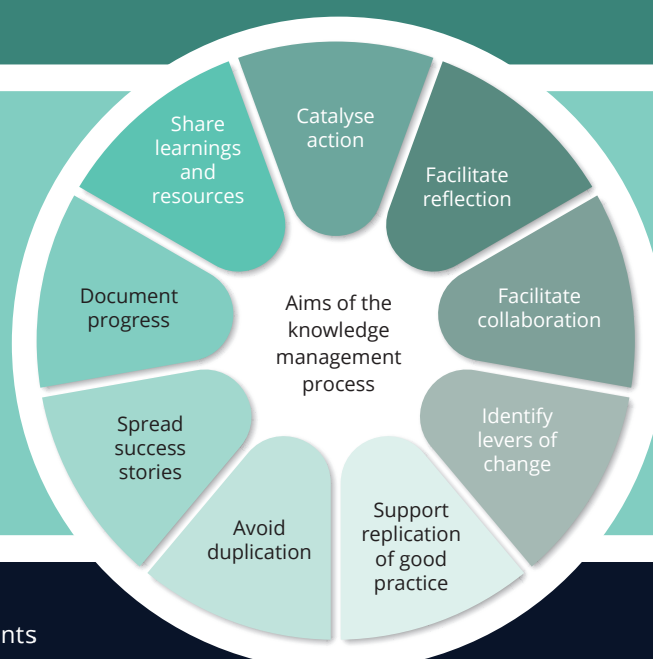
M&E CoP PARTICIPANT

History of the M&E CoP

A small M&E colloquium began in 2013, under the Maths & Science CoP. The aim was to consider the lessons learned from evaluations of Maths and Science programmes. The need to understand the 'how' of M&E, and the implications of evaluation data, was then recognised. From late 2016 the focus shifted to the processes and methodologies of M&E as a discipline in itself, with meetings sharing approaches, tools and practical applications in a range of educational contexts. BRIDGE began a partnership with SAMEA in 2017, joined by Khulisa and Tshikululu more recently. The M&E CoP now falls under the Cross-cutting Themes focus area within BRIDGE.

Knowledge Management and the ECD CoP

Knowledge management for the ECD CoP means spreading the different types of information, practices, tools and resources that are shared in CoP meetings. All presentations and discussions are captured in Meeting Highlights, and a number of other types of 'knowledge products' that come out of the work of the CoP are widely disseminated to the sector in general through the BRIDGE website.



All knowledge products relating to CoP activities and achievements are on the M&E tab of the BRIDGE website www.bridge.org.za. Please contact info@bridge.org.za if you would like to take part in this CoP.