



**kst**

Partnering for Excellence  
in Education

# MONITORING AND EVALUATION PRESENTATION

AUGUST 2018



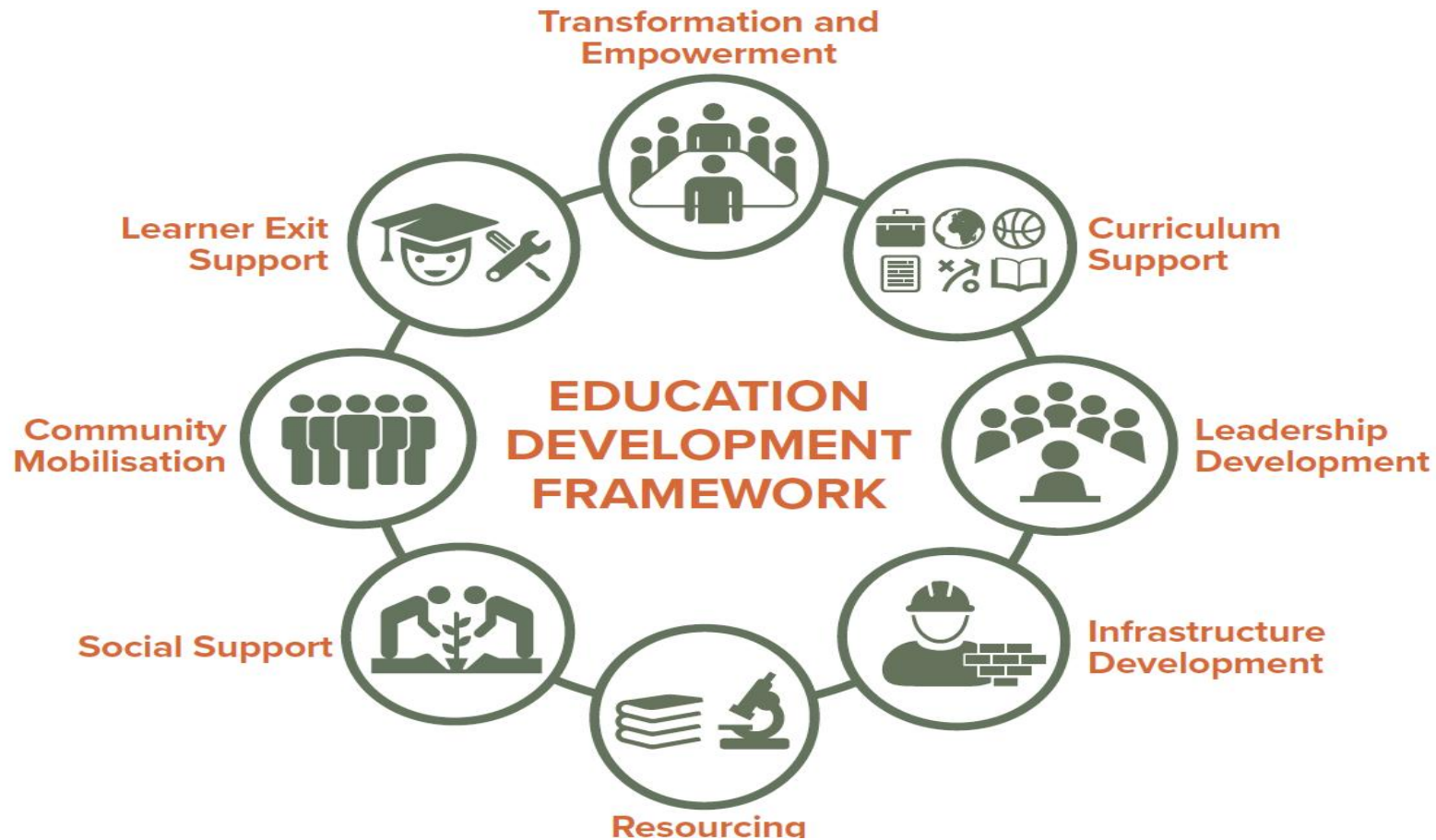
**kst**  
Partnering for Excellence  
in Education

# KAGISO SHANDUKA TRUST



# KST WHOLE SCHOOL DEVELOPMENT MODEL

The District Whole School Development Model views the school as a system, and encourages an understanding of 'the whole' before beginning to understand the parts.



## Monitoring and evaluation challenges

- No central database
- Data management system not in place
- No standard data collection tool
- Reporting at various levels not streamlined
- Internal monitoring not done
- Transparency in appointing monitoring and evaluation service provider
- No understanding of terms of reference of M&E service provider

## Short term and long term solutions

- Request access to central database
- Establish a data management system
- Standardise data collection tool
- Streamline reporting at various levels
- Establish internal monitoring
- Understanding of terms of reference of M&E service provider
- Create dashboard for reporting
- Google drive for document sharing

# Consultations process

- ❑ Technical meetings were held with curriculum project managers in May 2018.
- ❑ The purpose of the meetings was to develop monitoring tools and database templates to enhance the programme's monitoring and record keeping.
- ❑ The meeting was also used to review and strengthen the role of the project managers to ensure that there is accuracy in data collection, collation and reporting.
- ❑ The meeting also focused on role of project managers in monitoring and reporting on service provider delivery.
- ❑ Success indicators for the programme were deliberated upon - in particular how they are used to contract and manage service providers.
- ❑ The sustainability roadmap and measures were discussed to ensure that they are understood by all.

## Tools for monitoring and evaluation

- The initial Curriculum Manager School Monitoring & Support Tool was changed to a survey tool that can be printed and delivered to schools for completion
- Curriculum managers are now using a standardised Monitoring Tool for school visits
- A comprehensive school information database was formulated to include all the necessary data required for reporting.
- This database has been shared with SGS to incorporate into the new central database
- Service provider reporting template was used as a foundation to prepare the Monthly and Quarterly report templates for curriculum managers.
- The service provider workshop feedback form has been developed which include a checklist that curriculum managers can refer to, to monitor compliance.
- Curriculum managers will also make their own notes on this form which they will use in their monthly report